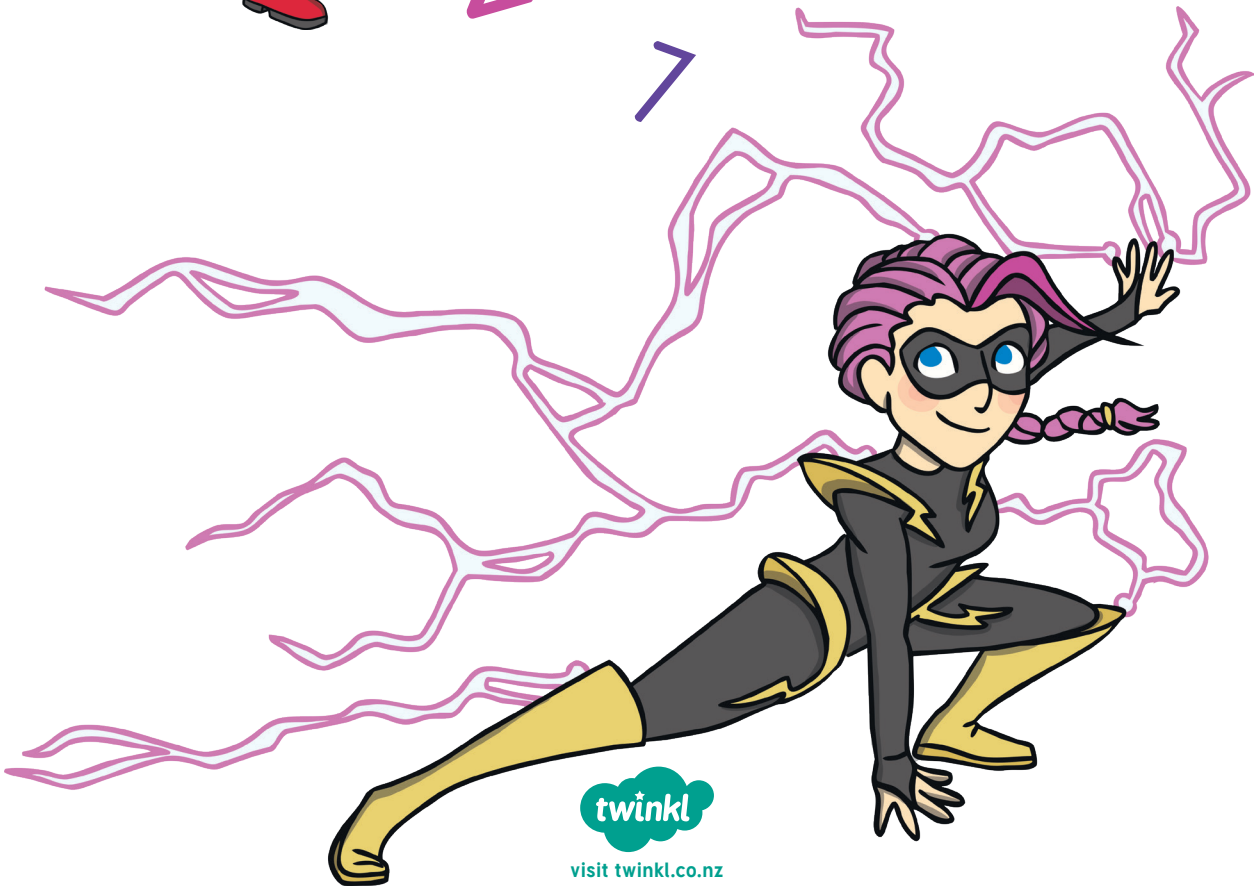
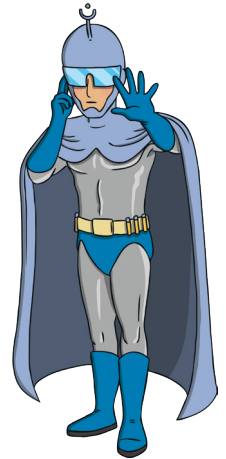
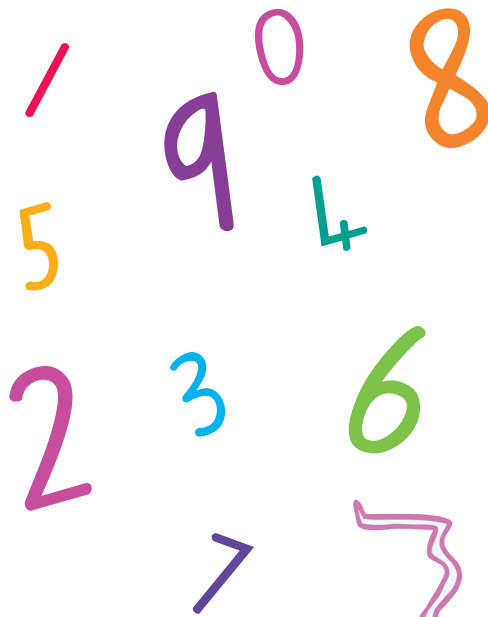


Basic Facts

Number Quest

Stage 4



visit [twinkl.co.nz](https://www.twinkl.co.nz)

Stage 4 Summary

Your child should:

- Say teen number facts (groupings with 10 / “ten and” facts).
- Recall facts that make 100 using decades (multiples of 10).
- Recall doubles and halves to 20.
- Instantly recall addition facts within 10.
- Instantly recall subtraction facts within 10.

There are eight stages that your child will progress through during their time at primary school and intermediate.

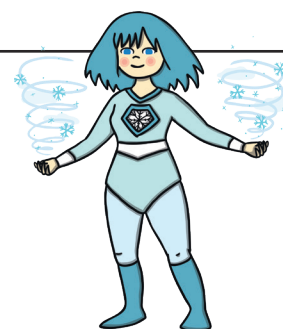
Use these suggested facts to help your child learn the knowledge they need for this stage. They need to answer each question within three – four seconds.

Possible ways you could use this resource to support your child’s learning are:

- oral testing, mixing them up;
- remove different parts of the question to create missing number questions;
- playing snap or other card games to focus on the specific knowledge;
- extend existing content by providing similar questions;
- change the order of the questions or missing parts.

Use this sheet to keep track of what you have practiced, how well you did and the time taken to complete the individual tasks.

#	Description	Completed	How I felt about the activity	I completed the task in?
4A	Teen facts.			
4B	Making 100			
4C	Doubles and halves to 20			
4D	Facts within 10			
4E	Subtraction facts within 10			



Number Quest 4A

Teen facts

$10 + 4 = \square$

$10 + 8 = \square$

$10 + \square = 17$

$10 + 2 = \square$

$10 + 3 = \square$

$10 + \square = 20$

$10 + \square = 19$

$10 + \square = 15$

Number Quest 4B

Making 100

$80 + \square = 100$

$30 + \square = 100$

$70 + \square = 100$

$50 + \square = 100$

$90 + \square = 100$

$10 + \square = 100$

$20 + \square = 100$

$40 + \square = 100$



Number Quest 4C

Doubles and Halves to 20

Double 6 is

Double 8 is

Double 9 is

Double 5 is

Half 14 is

Half 16 is

Half 8 is

Half 20 is

Number Quest 4D

Facts within 10

$4 + 5 =$

$6 + 3 =$

$2 + 8 =$

$3 + 2 =$

$6 + 2 =$

$4 + 3 =$

$3 + 5 =$

$2 + 7 =$

Number Quest 4E

Subtraction Facts within 10

$7 - 3 =$

$6 - 3 =$

$3 - 3 =$

$9 - 2 =$

$10 - 6 =$

$8 - 6 =$

$5 - 4 =$

$9 - 6 =$

$7 - 4 =$



Turn the page for answers!

Basic Facts Number Quest Stage 4 Answers

Number Quest 4A Teen facts

$$10 + 4 = 14$$

$$10 + 8 = 18$$

$$10 + 7 = 17$$

$$10 + 2 = 12$$

$$10 + 3 = 13$$

$$10 + 10 = 20$$

$$10 + 9 = 19$$

$$10 + 5 = 15$$

Number Quest 4B Making 100

$$80 + 20 = 100$$

$$30 + 70 = 100$$

$$70 + 30 = 100$$

$$50 + 50 = 100$$

$$90 + 10 = 100$$

$$10 + 90 = 100$$

$$20 + 80 = 100$$

$$40 + 60 = 100$$

Number Quest 4C Doubles and Halves to 20

$$\text{Double } 6 \text{ is } 12$$

$$\text{Double } 8 \text{ is } 16$$

$$\text{Double } 9 \text{ is } 18$$

$$\text{Double } 5 \text{ is } 10$$

$$\text{Half } 14 \text{ is } 7$$

$$\text{Half } 16 \text{ is } 8$$

$$\text{Half } 8 \text{ is } 4$$

$$\text{Half } 20 \text{ is } 10$$

Number Quest 4D Facts within 10

$$4 + 5 = 9$$

$$6 + 3 = 9$$

$$2 + 8 = 10$$

$$3 + 2 = 5$$

$$6 + 2 = 8$$

$$4 + 3 = 7$$

$$3 + 5 = 8$$

$$2 + 7 = 9$$

Number Quest 4E Subtraction Facts within 10

$$7 - 3 = 4$$

$$9 - 2 = 7$$

$$5 - 4 = 1$$

$$6 - 3 = 3$$

$$10 - 6 = 4$$

$$9 - 6 = 3$$

$$3 - 3 = 0$$

$$8 - 6 = 2$$

$$7 - 4 = 3$$